

# MAIN TECHNICAL FEATURES

## 主要技术参数

MODEL			UNIT	DP300/3500	DP300/5000	DP400/5000
INJECTION UNIT 注射单元	螺杆长径比	Screw L/D Ration	L/D	25	25	25
	螺杆直径	Screw Diameter	mm	100	120	120
	射出量 (PET)	Shot Weight(PET)	g	3500	5000	5000
	塑化率 (PET)	Plasticizing Rate(PET)	g/s	200	300	300
CLAMPING UNIT 合模单元	锁模力	Clamping Force	T	300	300	400
	移模行程	Clamping Stroke	mm	585	585	670
	最大/小模厚	Max/min Thickness of Mould	mm	300~720	300~720	300~820
	导杆间距(宽x高)	Space Between Tie Bars(WxH)	mm	660×760	660×760	845×845
	顶出行程	Ejector Stroke	mm	180	180	180
	顶出力	Ejector Force	T	20	20	28
MOULD 模具规格	顶出杆根数	No.of Ejector Pins	pcs	9	9	13
	最大腔数	Cavity(Max)	pcs	72	72	96
POWER UNIT 电气单元	模具形式	Type of Mould	气动针阀式热流道瓶坯模具 Needle Vale Of Non-cutting PET Preform Mold			
	马达功率	Pump Motor Power	KW	81+82	81+82	81+82
	机械手功率	Robot Power	KW	36	36	43
	熔胶电热容量	Heater Input Capacity	KW	78	86	86
ROBOT 取胚冷却机械手	模具加热容量	Mould Heater Capacity	KW	55	55	68
	机械手真空吸头	Manipulator	cavity	216	216	288
	瓶坯冷却装置	Cooling Form	cavity	216	216	288
OTHER 其他	电力要求 (交流三相四线制)	Power supply (3-phase AC)	V/HZ	380/50	380/50	380/50
			KW	332	332	360
	冷冻水要求	Chilling Water	°C	5~10	5~10	5~10
			Mpa	0.8	0.8	0.8
			L/min	900	900	1200
	冷却水要求	Cooling Water	°C	<25	<25	<25
			Mpa	0.3	0.3	0.3
			L/min	300	300	300
	压缩空气要求	Compressed Air	Mpa	0.7~0.9	0.7~0.9	0.7~0.9
			L/min	800	800	1200
主机外型尺寸(长x宽x高)	Machine Size(LxWxH)	cm	930×180×250	990×180×250	1090×205×260	
整机重量	Machine Weight	T	26	28	34	

德玛克保留对产品进行修改的权利, 规格如有变动, 恕不另行通知。

Demark reserve the rights to make any product improvement or specification change without prior notice.



### 德玛克控股集团

地址: 中国浙江省湖州市长兴国家级开发区发展大道2587号

电话: 0572-6559071

上海分公司电话: 021-60391126

邮箱: sales@demark-pet.com

### DEMARK HOLDING GROUP

Add: No. 2587, Development Avenue, Changxing, Huzhou, Zhejiang Province, China

TEL: +86-572-6559071

SHANGHAI BRANCH TEL: +86-21-60391126

EMAIL: sales@demark-pet.com

[www.demark-pet.com](http://www.demark-pet.com)

ISO9001 & CE

©Copyright DEMARK CO., LTD. Information subject to alteration. 2017-11版

◇ 由于印刷的关系, 故正式机器的颜色与所示的图片有部分差异, 一切以机器实样为准。



## DP 系列高速瓶坯注塑系统

DP HIGH SPEED PREFORM INJECTION SYSTEM



**DEMARK**

## HIGH QUALITY PREFORM PRODUCTION SYSTEM BUT WITH LOWER INVESTMENT

### 投资更低的高品质瓶坯生产系统

德玛克DP高速瓶坯生产系统为您带来与欧洲设备同源的系统配置，但是投资却比之前更低。高达96腔的瓶坯生产系统包含双螺杆设计高速瓶坯注塑机，精密瓶坯注塑模具，模后冷却机械手，集中控制系统和高效原料干燥系统，为您带来更高的生产效率，更低的投资成本，更优的成品质量。

不仅如此，德玛克还秉承包括瓶坯设计和整厂规划等交钥匙服务理念，为您从多个维度提供更多的建议和帮助，使得您在竞争激烈和快速变化的市场始终保持长期的竞争力。

Demark DP high speed preform production system allows you gain the same level of specification as European machine but with lower investment cost at the same time. The system can produce with the preform injection system can produce with the preform injection molds up to 96 cavities which including double screw design high speed injection machine precision preform injection molds, post cooling, take out robot, centralized control system and high efficient material drying system. The results are higher production efficiency, lower investment expense and better preform quality.

Demark also insist on the "turnkey" solution concept by offering preform design and whole plant planning to our customers with more suggestion on various aspects to help our customers keep long term competitive strength in the hyper competitive, changeful consuming market.



### 伺服电机溶胶 Electric screw drive

进口伺服电机溶胶，带来了节能和效率的双重提升  
Independent electric screw drive brings you both melting and energy efficiency.

### 同步溶胶 Synchronous melting

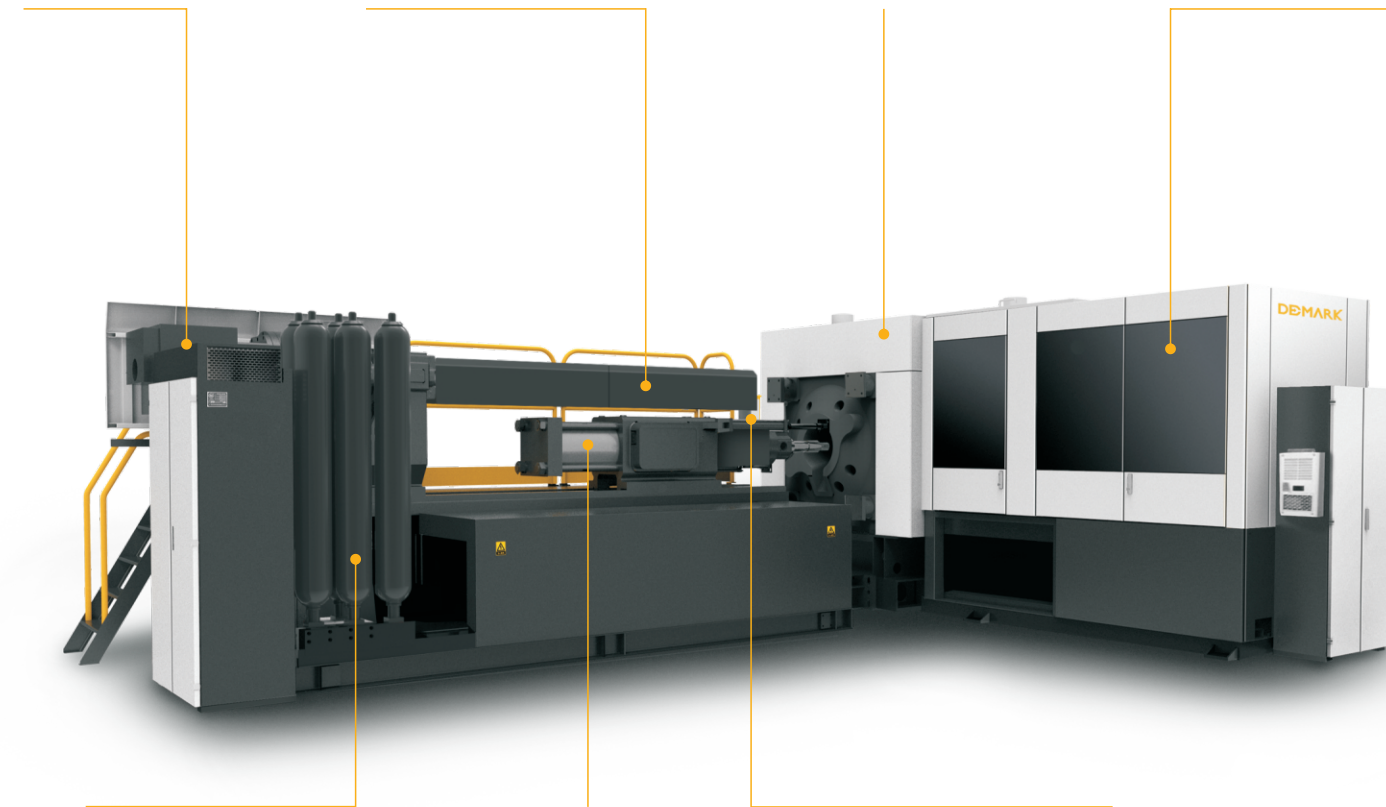
可实现溶胶和射胶同步进行，大幅度缩短成型周期  
Synchronous material melting, plasticization and injection at the same.

### 可靠的锁模 Reliable clamping

专为PET瓶坯模具设计的模板结构，使得模具各部分都受力均匀，同时保证了高速开合模的要求  
Special design for PET preform mold, which ensure the fast clamping movement and uniformly forced of the mold.

### 后冷却机械手 Post cooling take out robot

三工位模后冷却机械手使瓶坯充分冷却的同时，更缩短了产品生产周期  
Three station post cooling robot makes the preform perfectly cooled with better cycle time.



### 高效蓄能器 High efficient accumulator

最高五组的高效蓄能器保证了大注射量的快速和稳定  
Up to 5 sets of high efficient accumulator ensure the stability of high capacity injection.

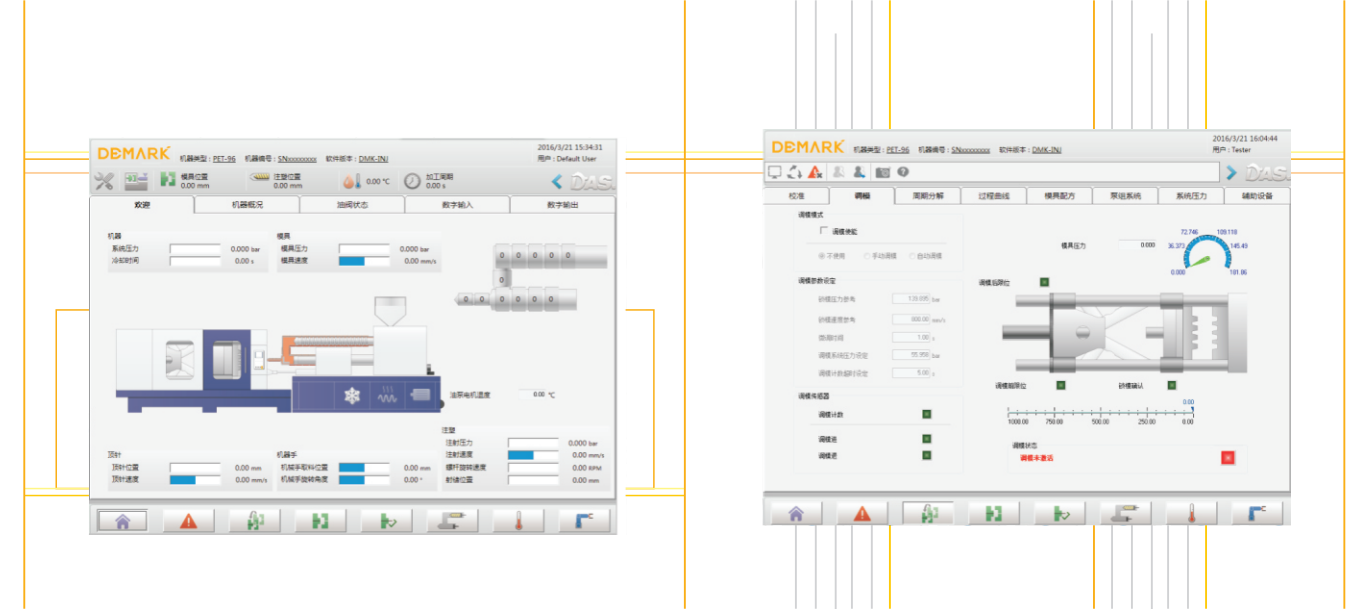
### 伺服阀控制 Servo valve control

先进的伺服阀控制理念，使得射胶更加精准  
Advanced servo valve control technology makes the highly dynamic injection possible.

### 人机交互系统 HCI control system

专门为PET生产设计的基于德国倍福的集中操作系统  
BECKHOFF centralized control system special designed for PET production.

## HCI CONTROL SYSTEM 人机交互系统



德玛克采用的新一代HCI人机交互系统是基于BECKHOFF平台设计开发的注塑机控制系统。具有以下优势：

- 稳定快速的生产周期；
- 快速的PLC执行周期；
- 高性能的PC和快速的I/O；
- 各控制部件的快速通讯能力；
- 自校正和自适应的控制方法；
- 高级的各种速度、压力、温度等的控制算法和节能的控制策略。
- 友好的用户设计与界面
- 广泛使用有意义的逼真图标以便直观操作；
- 最少按钮操作步数来达到最快的信息获取；
- 单一按钮操作；
- 明了精确的报警功能；
- 详细的操作事件记录
- 15寸触摸屏，2.16G双核处理器，3GB缓存，80GB硬盘
- 非接触式电子尺，寿命长，EtherCAT通讯数字信号传输，抗干扰强

The new generation Demark HCI control system is a PC based control system by BECKHOFF injection control solution. The system could has following advantage:

- Stable and fast cycle time.
- Fast PLC execution time.
- High performance PC and fast I/O capability.
- Quick communication thought all control components.
- Self-adjustment and self-adaption.
- High level control algorithm for speed, pressure and temperature. High level control strategy for reducing energy consumption.
- Friendly user interface design.
- Intuitive icon design for fast learning and control.
- Fast information reading by press less buttons.
- Single function button design.
- Clear and accuracy alarm function.
- Detailed event log.
- 15 Inch touch screen, 2.1G dual core CPU, 3GB memory and 80GB hard drive equipped.
- No touched electronic ruler with longer life time, and EtherCAT digital single with stronger anti-interference capability.